



## Addendum to Family Handbook

---

### Student Arrival and Dismissal

#### Arrival Instructions:

##### 1. Arriving from the east or west on Hepler Blvd.

- Wait for the crossing guard to signal your entrance into the loop drive.
- Follow the loop in a single line.
- Students will exit the car onto the sidewalk only. Students should only exit their vehicle after it has reached the sidewalk.
- Do not stop on Hepler Blvd. and let your student out of the car.
- No smoking, cursing, or inappropriate language while on school property.



#### Departure Instructions:

- K-2 students are released at 3:15 pm.
- Students in grades 3-8 are released at 3:30 pm.
- Walkers are released at 3:40 pm.

##### 1. Arriving from east or west on Hepler Blvd.

- Wait for the crossing guard to signal your entrance into the loop drive.
- The car line will be doubled (two lines of cars moving around the loop).

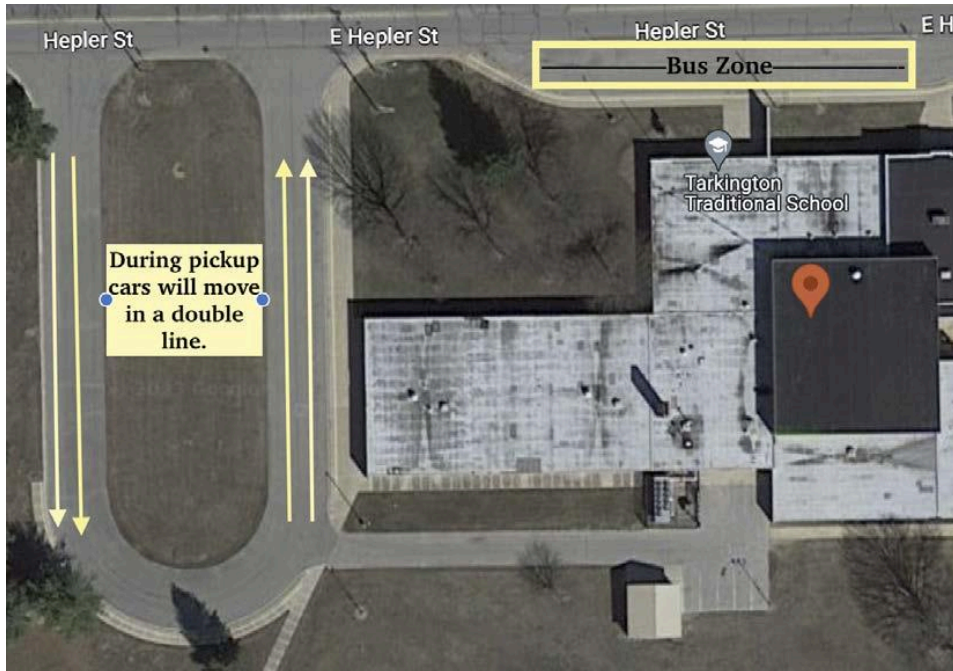
**Paramount Schools of Excellence - South Bend**

3414 Hepler Street, South Bend, IN 46635

574.274.4785

[paramountindy.org/south-bend](http://paramountindy.org/south-bend)

- c. Students will exit the building according to the car tag number and enter their vehicles.
- d. When all cars are loaded, the remaining students will be held at the building, and vehicles will be released to leave.
- e. The speed limit is 10 mph - please drive slowly and carefully.



## Before and After-Care Program

The Before and After-School Care program is facilitated by and responsible for by the Boys and Girls Club of St. Joseph County. For safety reasons, students in grades K – 8 must be signed in by parents/guardians (not dropped off outside of school) and registered with the Boys and Girls Club.

A per-child fee for the care will be billed through the Boys and Girls Club. Any student participating in the program must have a registration form on file with the Boys and Girls Club. Any parent/guardian delinquent on payments to the Boys and Girls Club whose students continue to attend the YMCA may be subject to strict fines for delinquency and permanent removal from the program.

## Weather Delays and School Closures

- Delays and closing decisions will be made by 6:00 am.
- Notifications: automated calls to families, WSBT 22, WNDU 16, Paramount South Bend Facebook.

Please keep PowerSchool contacts current for automated calls.

### Paramount Schools of Excellence - South Bend

3414 Hepler Street, South Bend, IN 46635

574.274.4785

[paramountindy.org/south-bend](http://paramountindy.org/south-bend)